

# BISEPS |

Business clusters Integrated Sustainable Energy PackageS

Complementarity and synergy with project BISEPS

Evelien Bolle - WVI

## 1. The BISEPS - project

### Project duration:

- May 2016 – May 2020

### Partners:

- Leiedal, WVI, POM-West Vlaanderen, MEL, CD2E, Gemeente Breda, West Sussex County Council, UGent

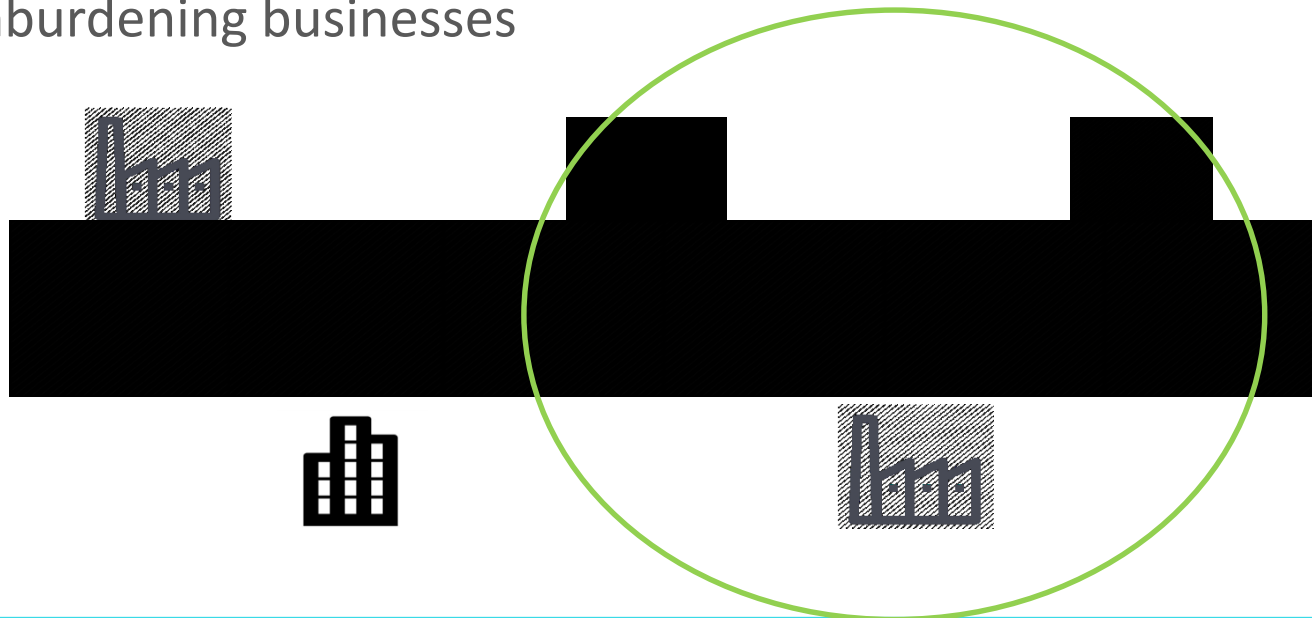
### Aim:

- Enable the adoption of midscale sustainable energy technologies in business clusters
  - Increasing energy profits
  - Reducing the CO<sub>2</sub> emission
  - Contributing to the achievement of the EU 2020 energy efficiency target.

## 1. The BISEPS - project

### Innovative:

- Focus on business clusters:
  - Creating energy synergies among businesses
  - Unlocking sustainable energy potential
  - Unburdening businesses



## 1. The BISEPS - project

### Expected impact:

- 200 businesses involved
- 4,000 tCO2 reduction/year
- €15 Million investments triggered

## 2. Living lab WVI

### 5 living labs:

- South-West-Flanders (B)
- Mid-West-Flanders (B)
- Breda (B)
- Royal Manor Business Park (UK)
- Business parks Lille Métropole (F)

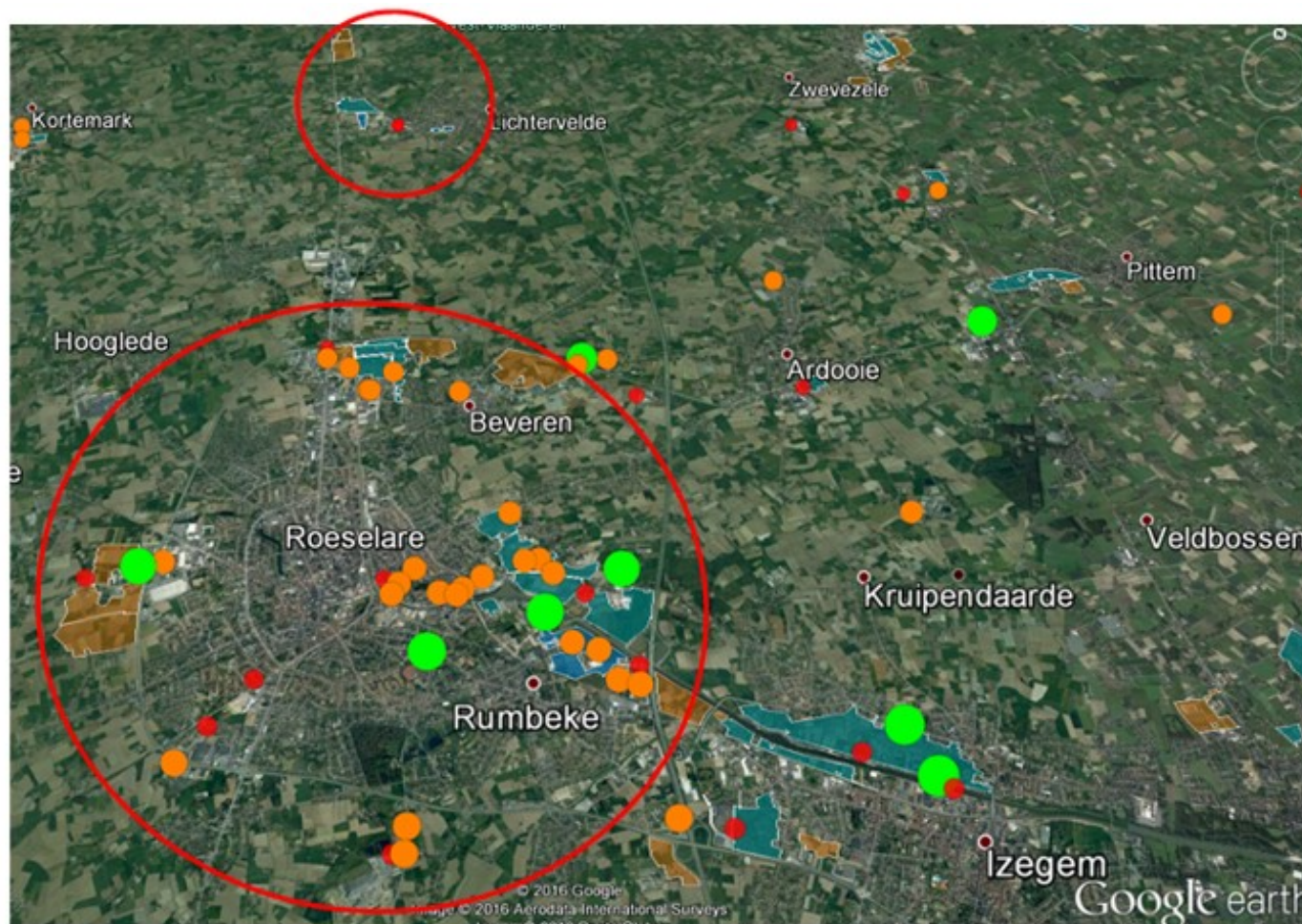


Connect supply & demand side

Involve stakeholders to tackle barriers

Prepare for investments (business cases)

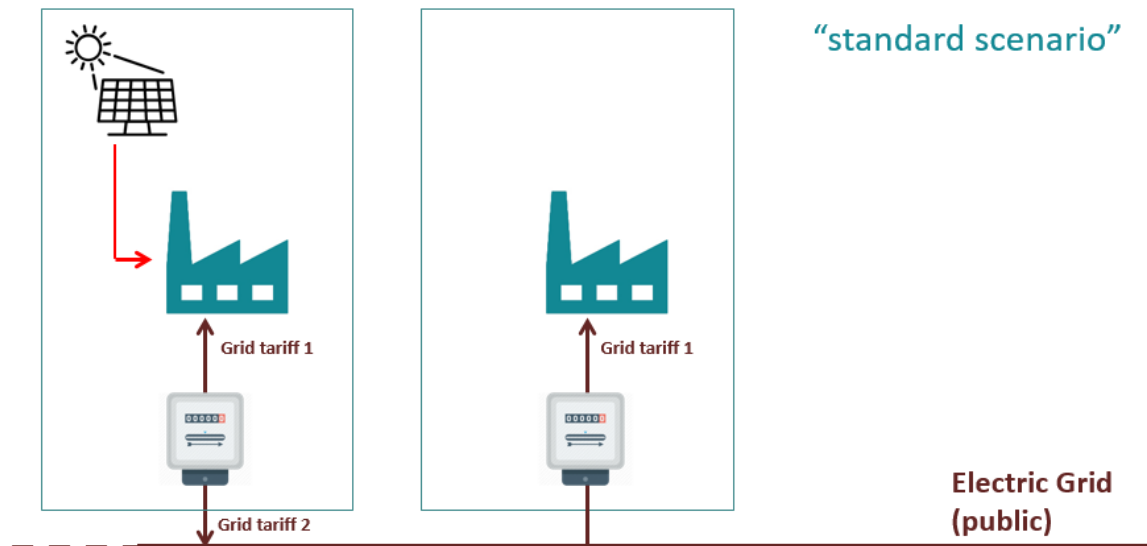
## 2. Living lab WVI



### 3. Barriers

#### Major barrier = Electricity sharing

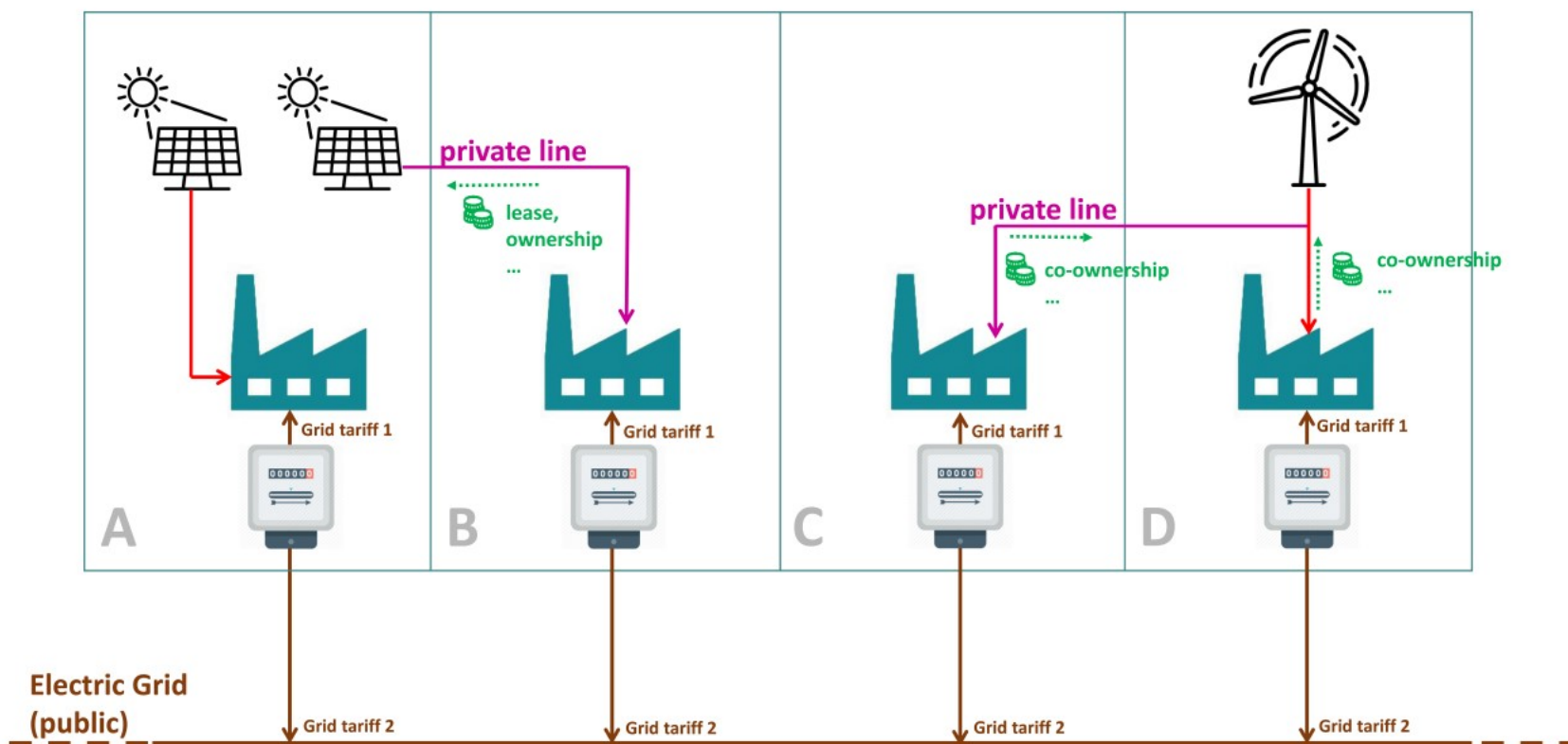
- Business models for renewable energy of companies are based on:
  - Avoiding energy costs
  - Avoiding grid costs
  - Avoiding taxes / VAT + subsidies





### 3. Barriers

Energy exchange via direct, private lines,...



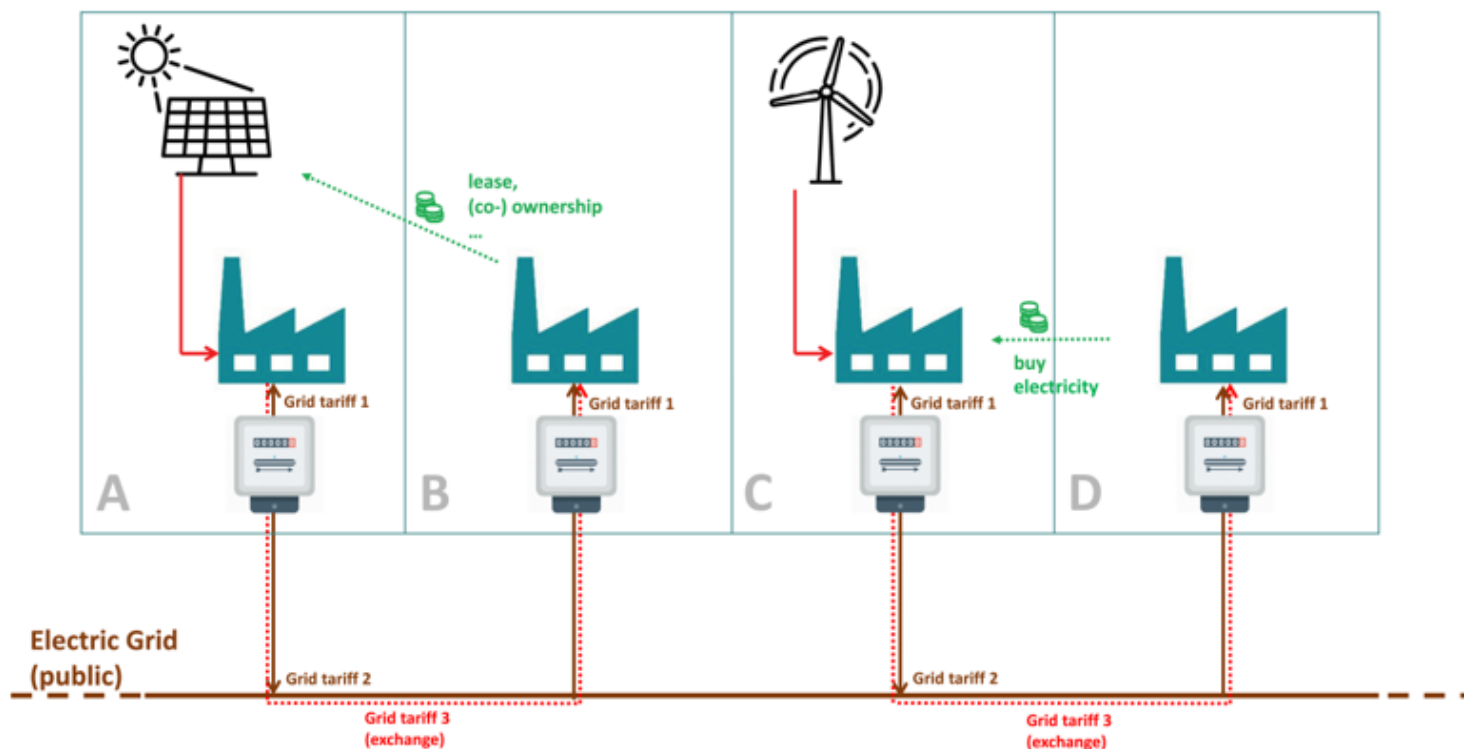


### 3. Barriers

#### Energy exchange via public grid

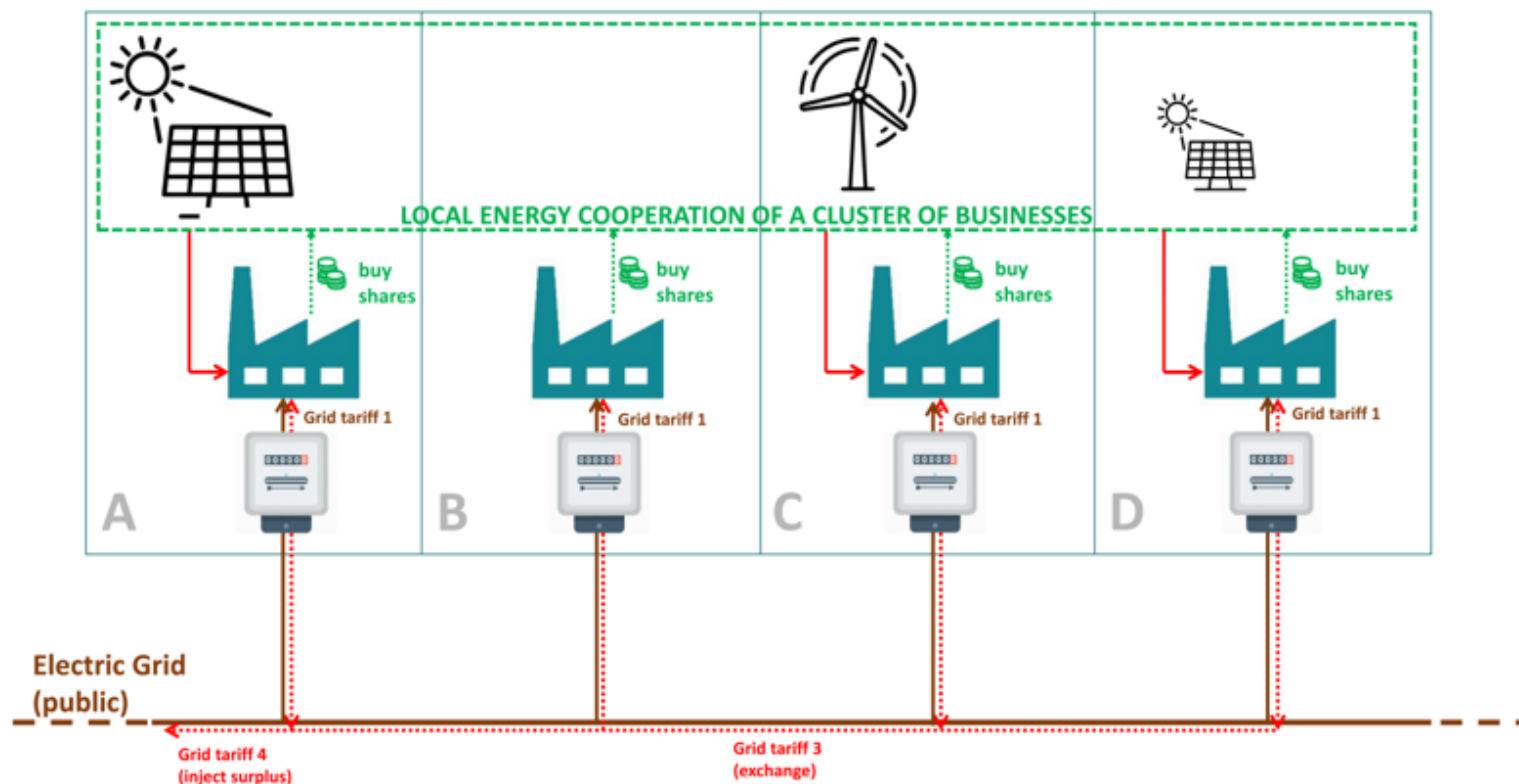
OPTION 1: B (CO-)OWNS AN INSTALLATION ON SITE A

OPTION 2: C SELLS SURPLUS ENERGY TO D



### 3. Barriers

#### Energy exchange via local energy cooperation



## 4. Cases set up

### Unburdening for PV:

- Focus on individual business:
  - Not part of the core business
  - Lot of questions
  - Interest in E-mobility
- Unburdening trajectory
  - Economic and technical feasibility study
  - Ask for offer (selected contractors)
  - Advice on offers

## 4. Cases set up

### Unburdening for PV:

- Businesses involved: 15
  - Not a lot of communication needed
  - Restricted budget
- Changing legislation
  - Direct lines
    - 2019
    - Charge:
      - €53,83/MWh low voltage
      - €5,95/MWh medium voltage



## 4. Cases set up

Maximize PV production on greenfields:

- WVI
  - Developer of business parks:
    - Greenfields
    - Brownfields
  - 19 principles for sustainability on business parks
- Changing legislation
  - Direct lines
  - The EU winter package: local energy communities

## 4. Cases set up

Maximize PV production on greenfields:

- Adapt selling conditions
  - Businesses are given the chance to invest themselves
  - Right of building for WVI after some years
    - Optimize roof surface for RE production/sustainability
    - Optimize RE production and use on business park
- Future proof