



DYNAMIC SIMULATIONS OF BUILDING INTEGRATED PV

ZIN IN NOORD: A CASE STUDY

Siemen Goetschalckx

INTRODUCTION

BASIC PV ROOF INSTALLATIONS



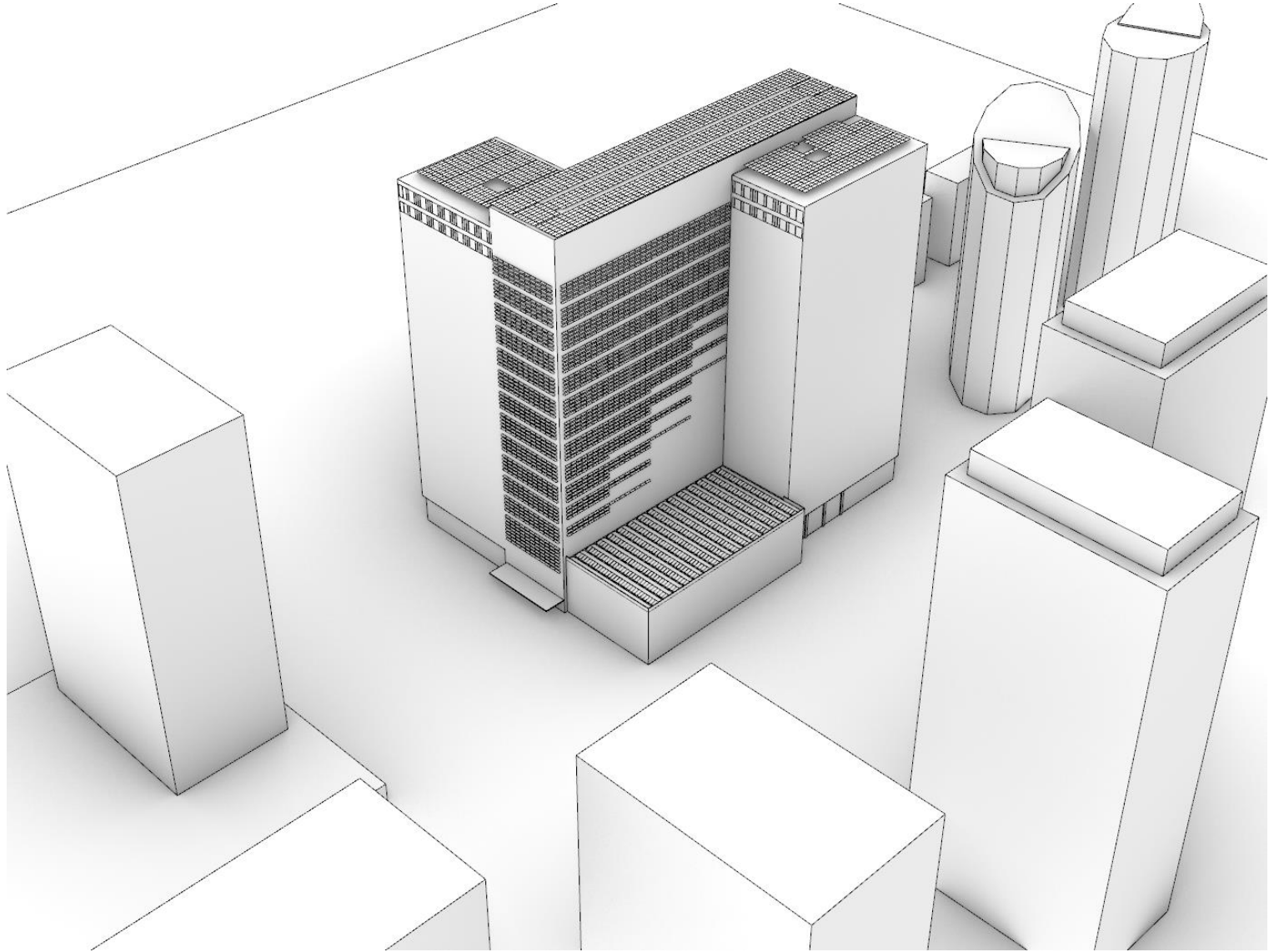
BUILDING INTEGRATED PV



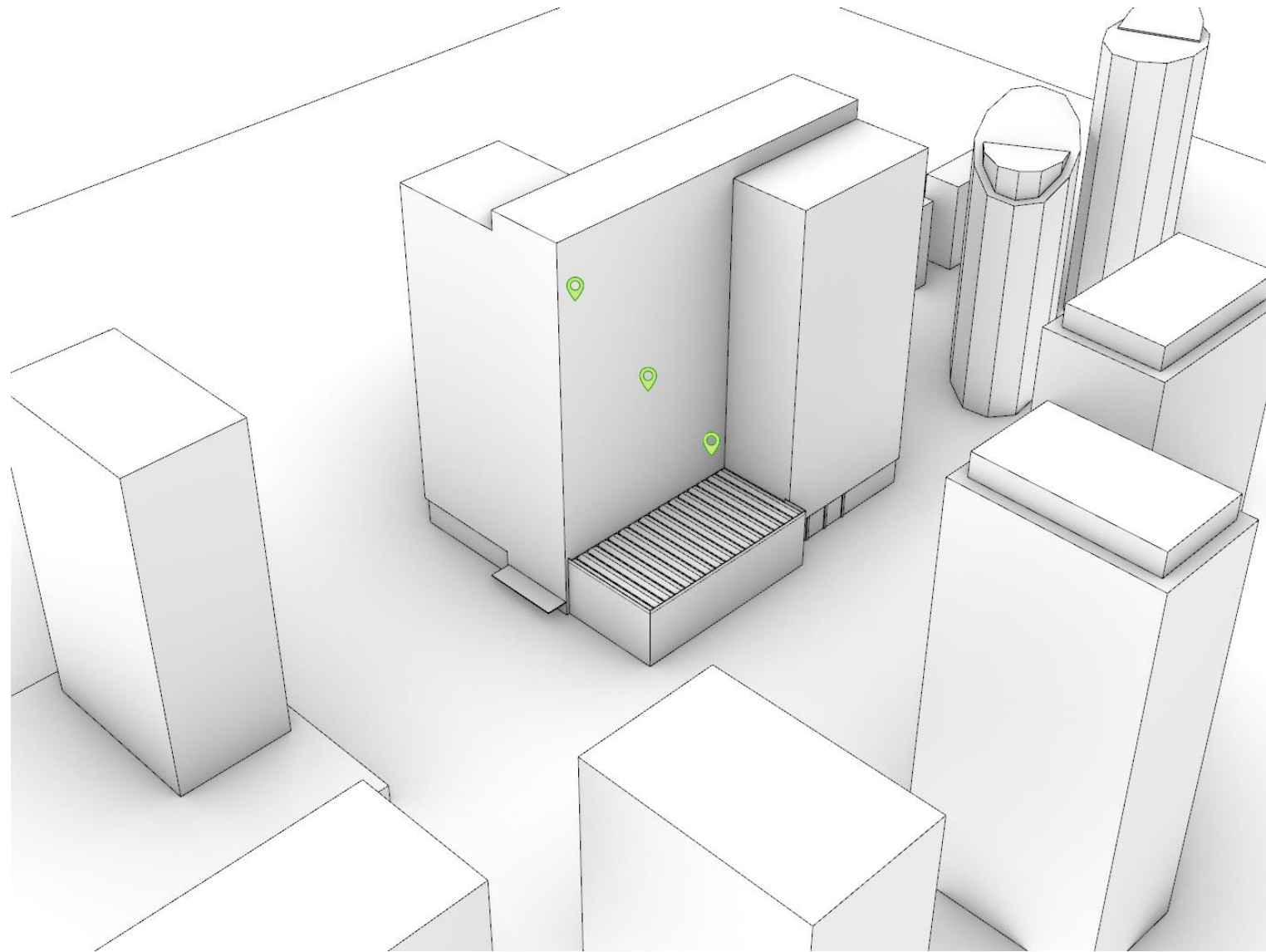
ZIN IN NOORD

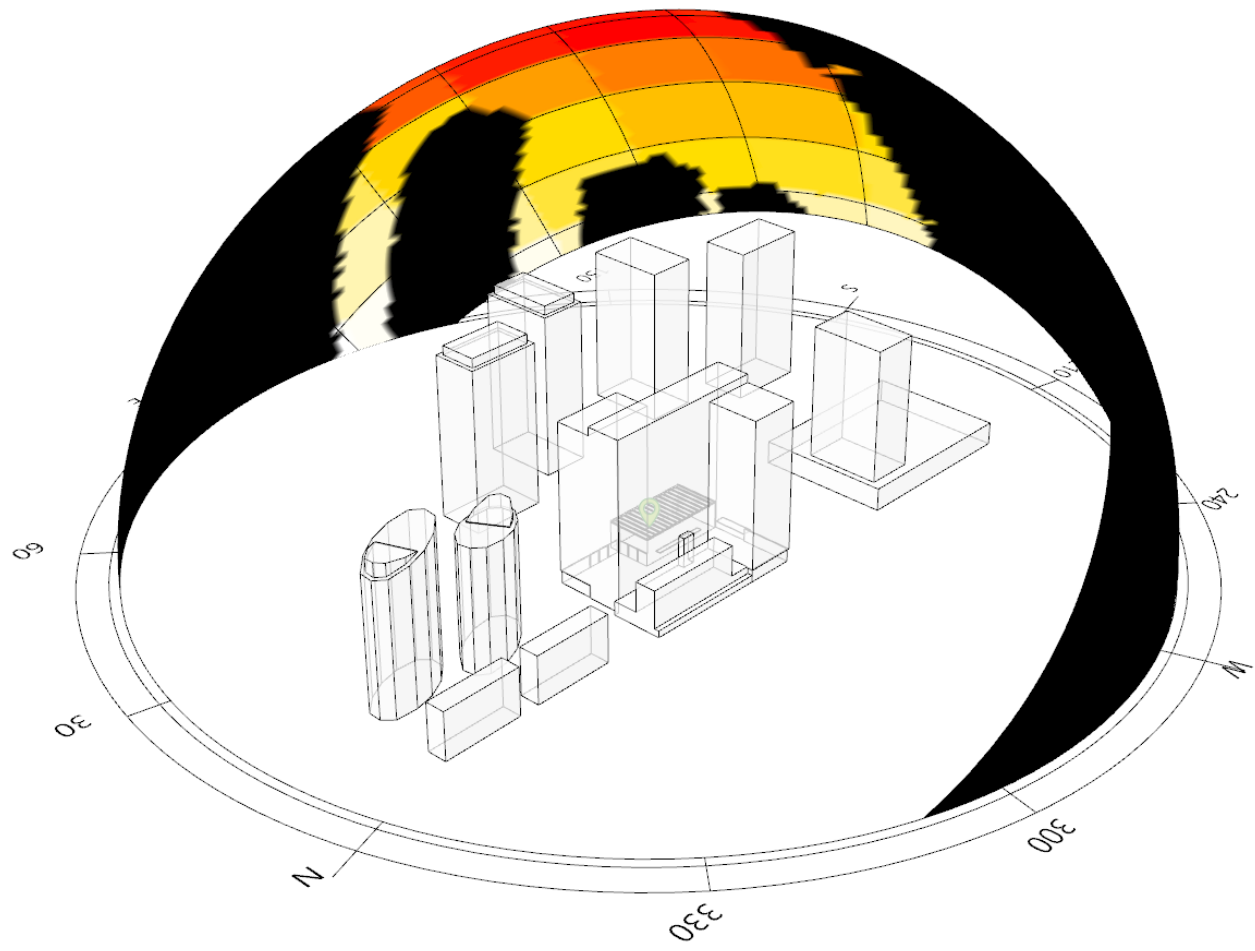
- Redevelopment of WTC 1 and 2 towers in Northern Quarter of Brussels
- Multifunctional project of 110.000 m² above ground
- Functions:
 - Offices for Flemish Government
 - Hotel
 - Apartments
 - Sports hall and fitness
 - Coworking spaces
- Reducing primary energy by geothermal energy, energy exchange between functions and BIPV

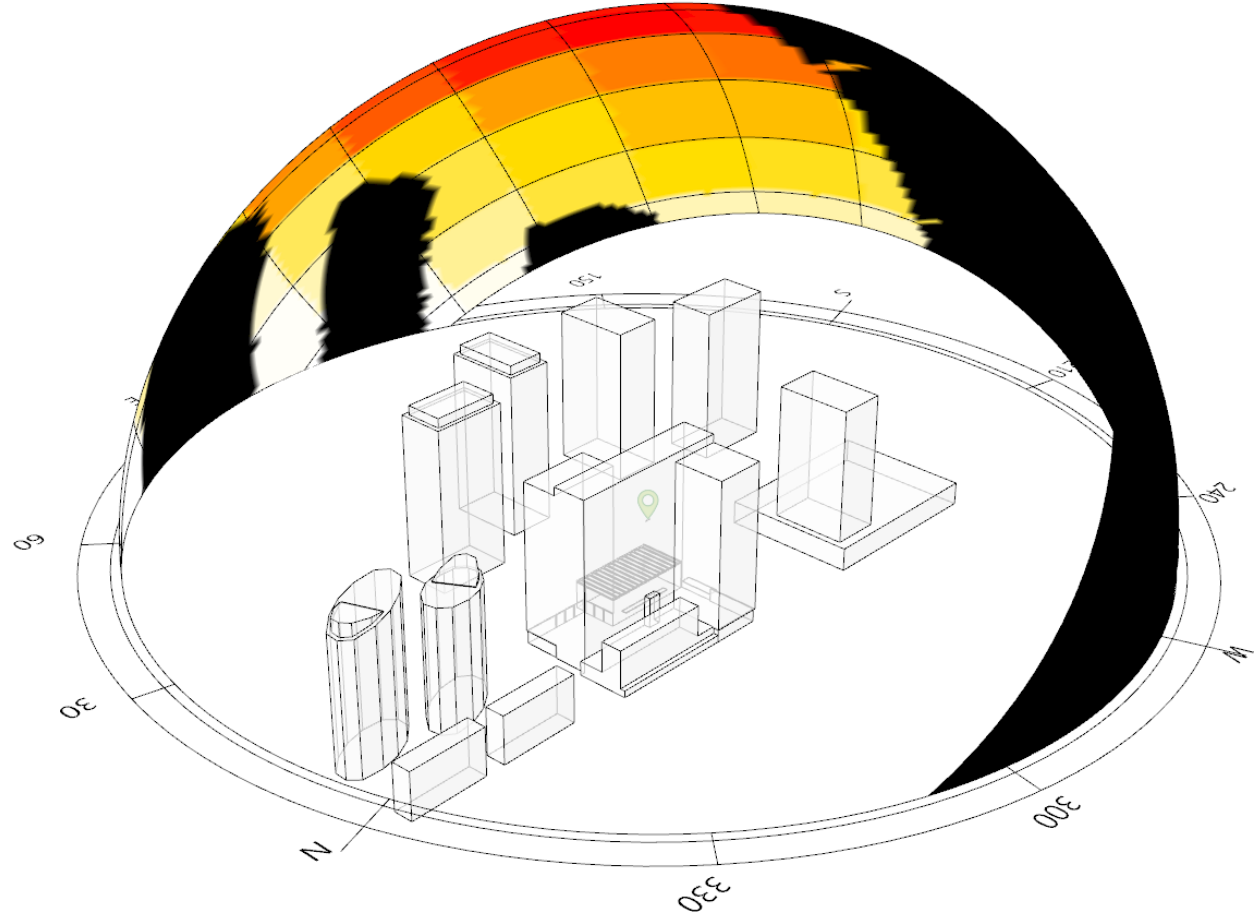


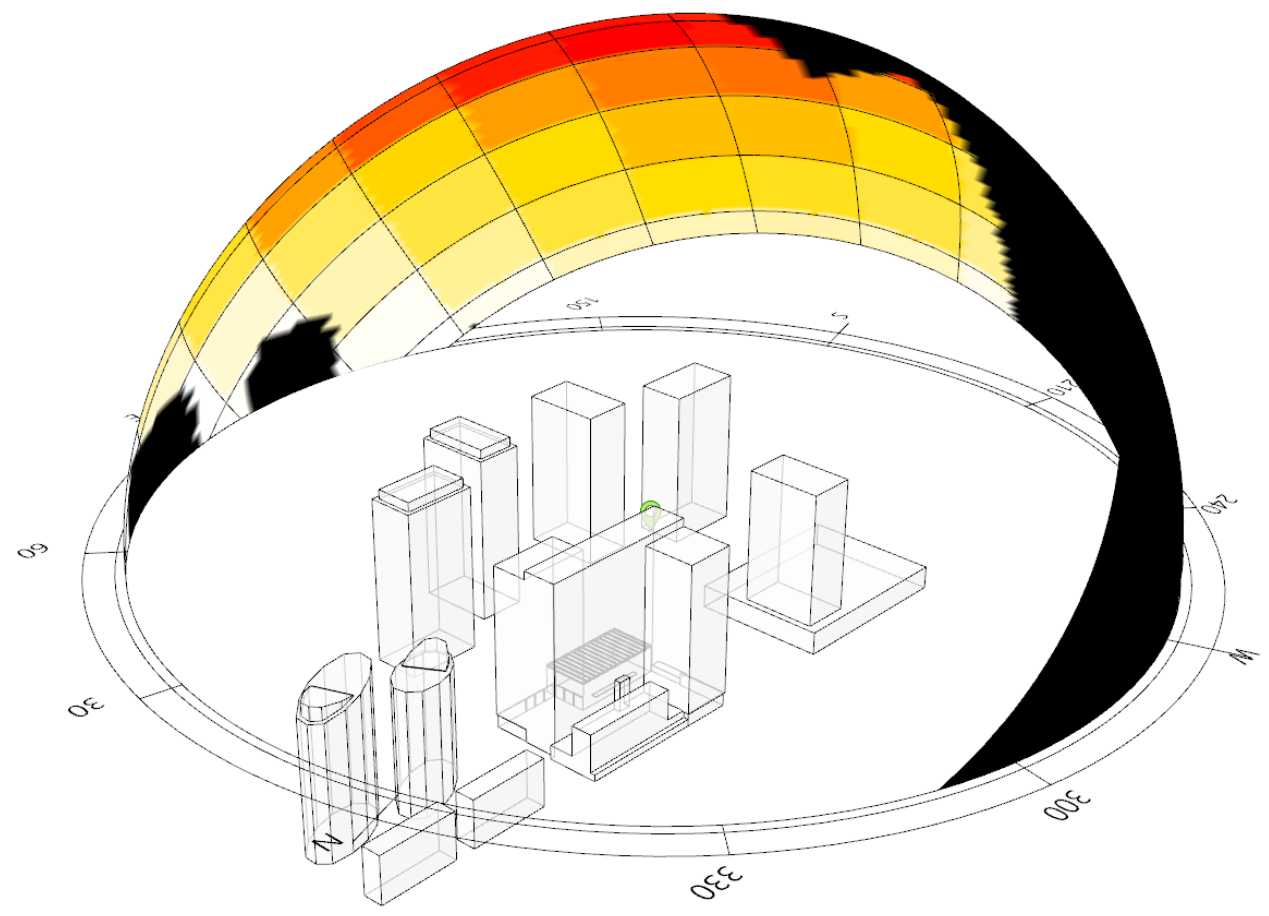


SHADING DOME

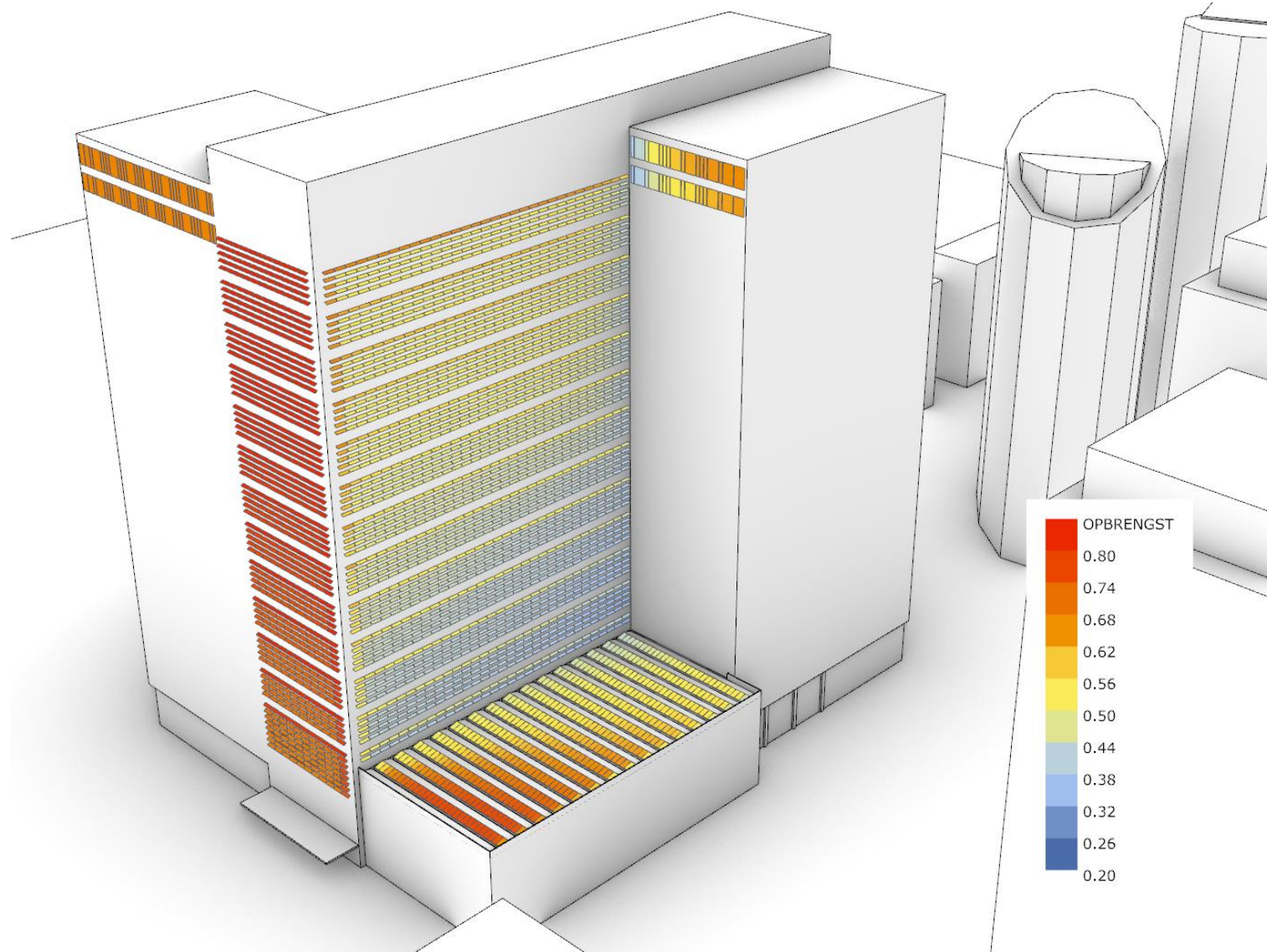


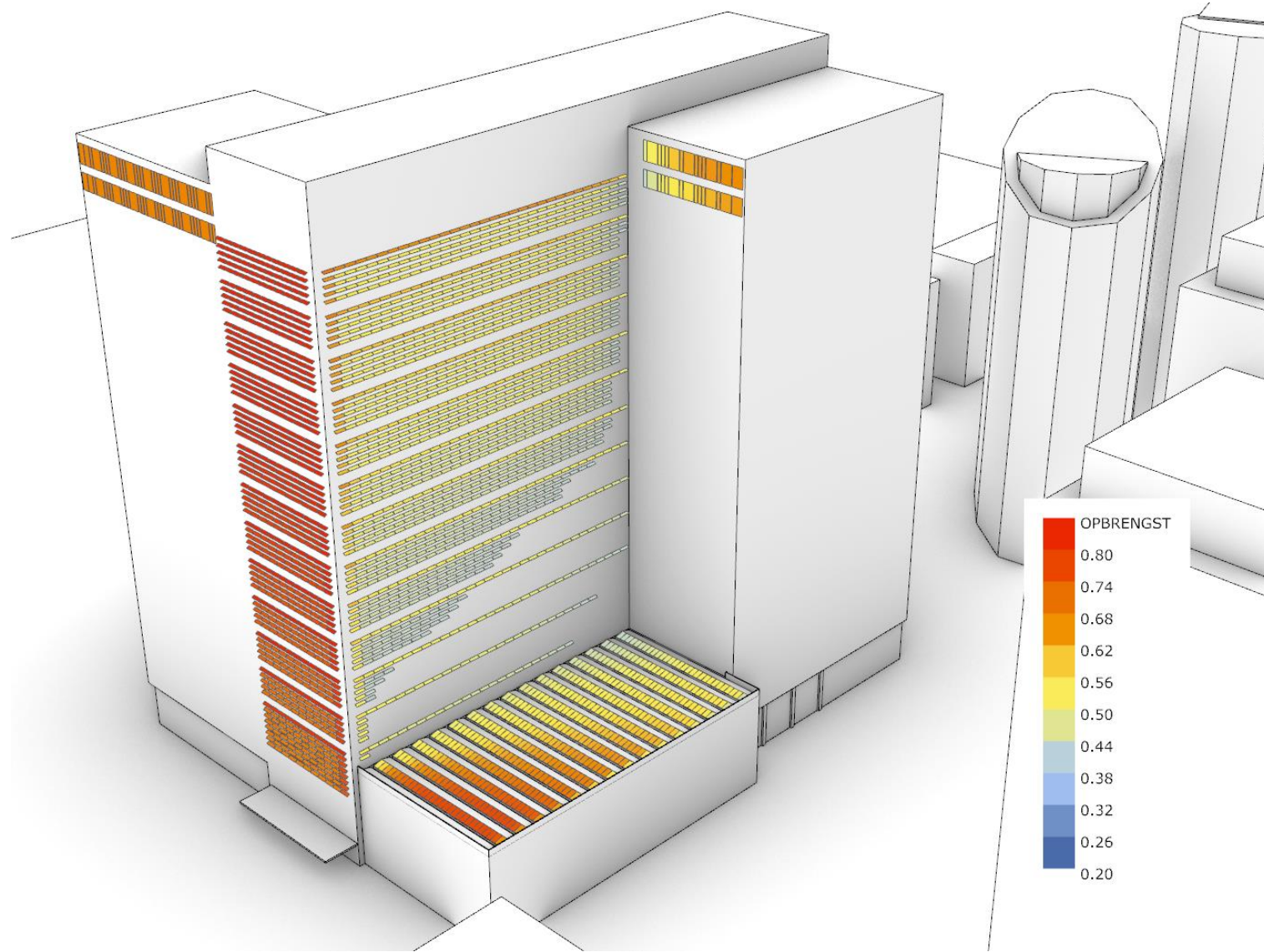


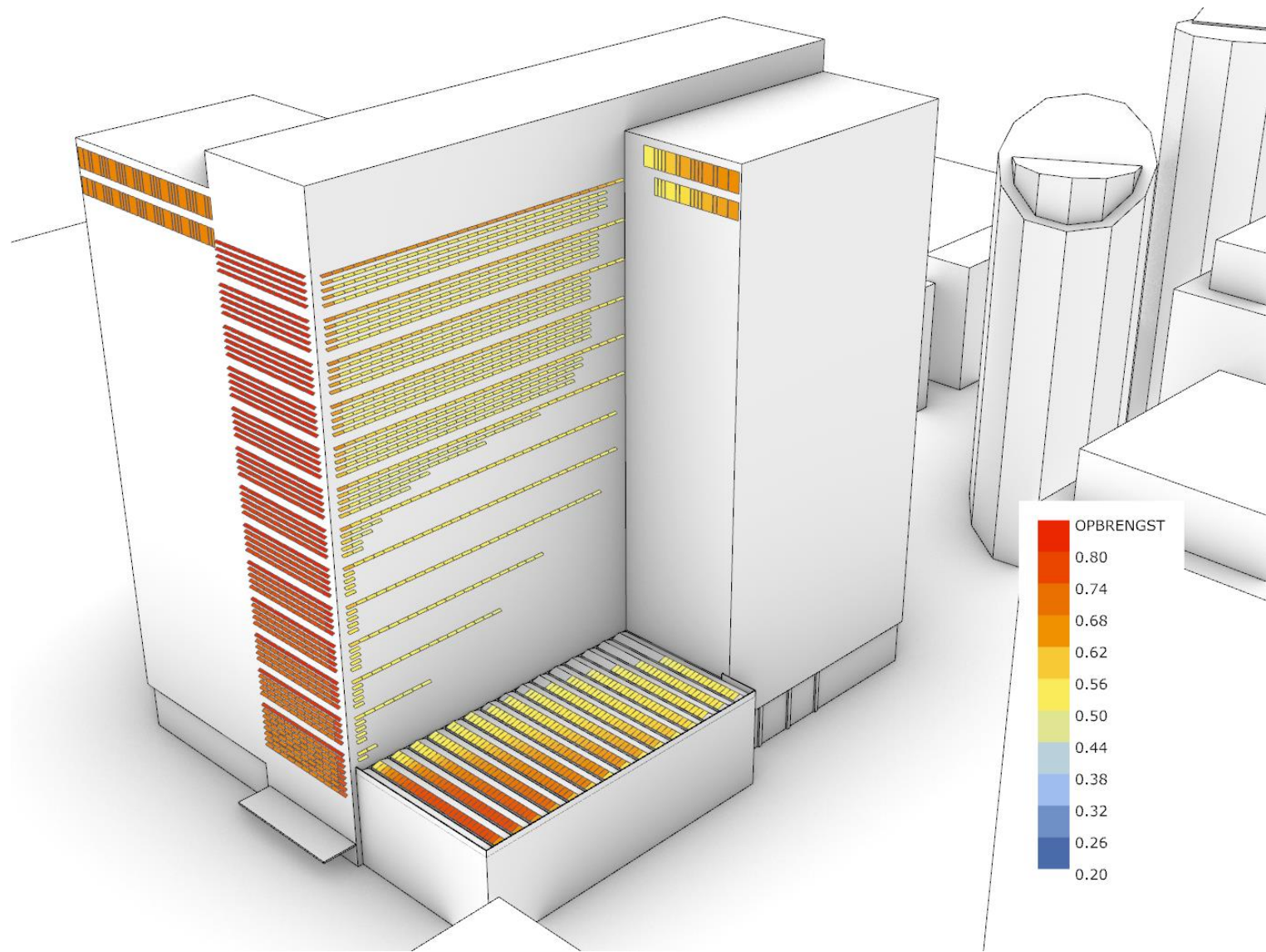


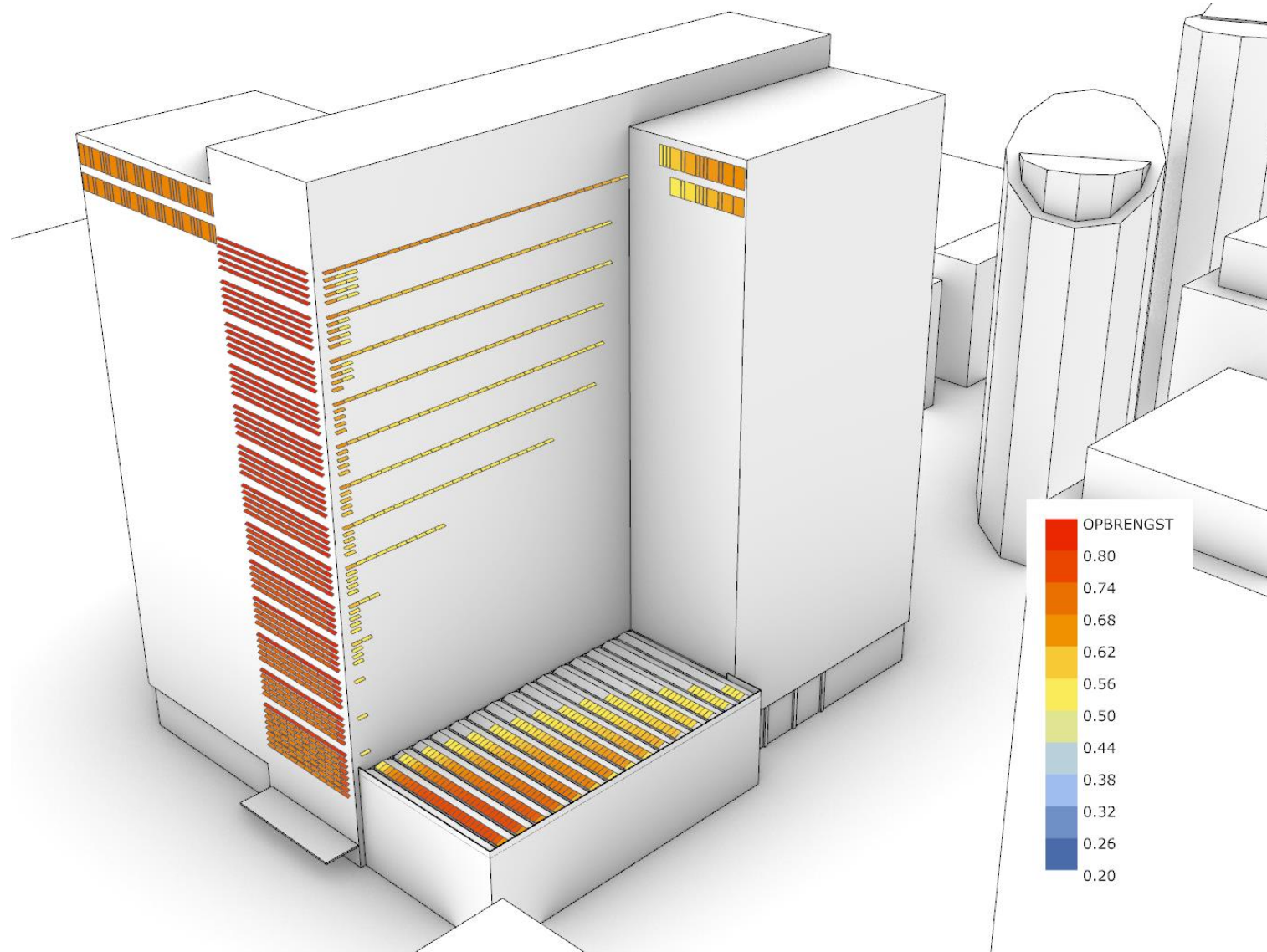


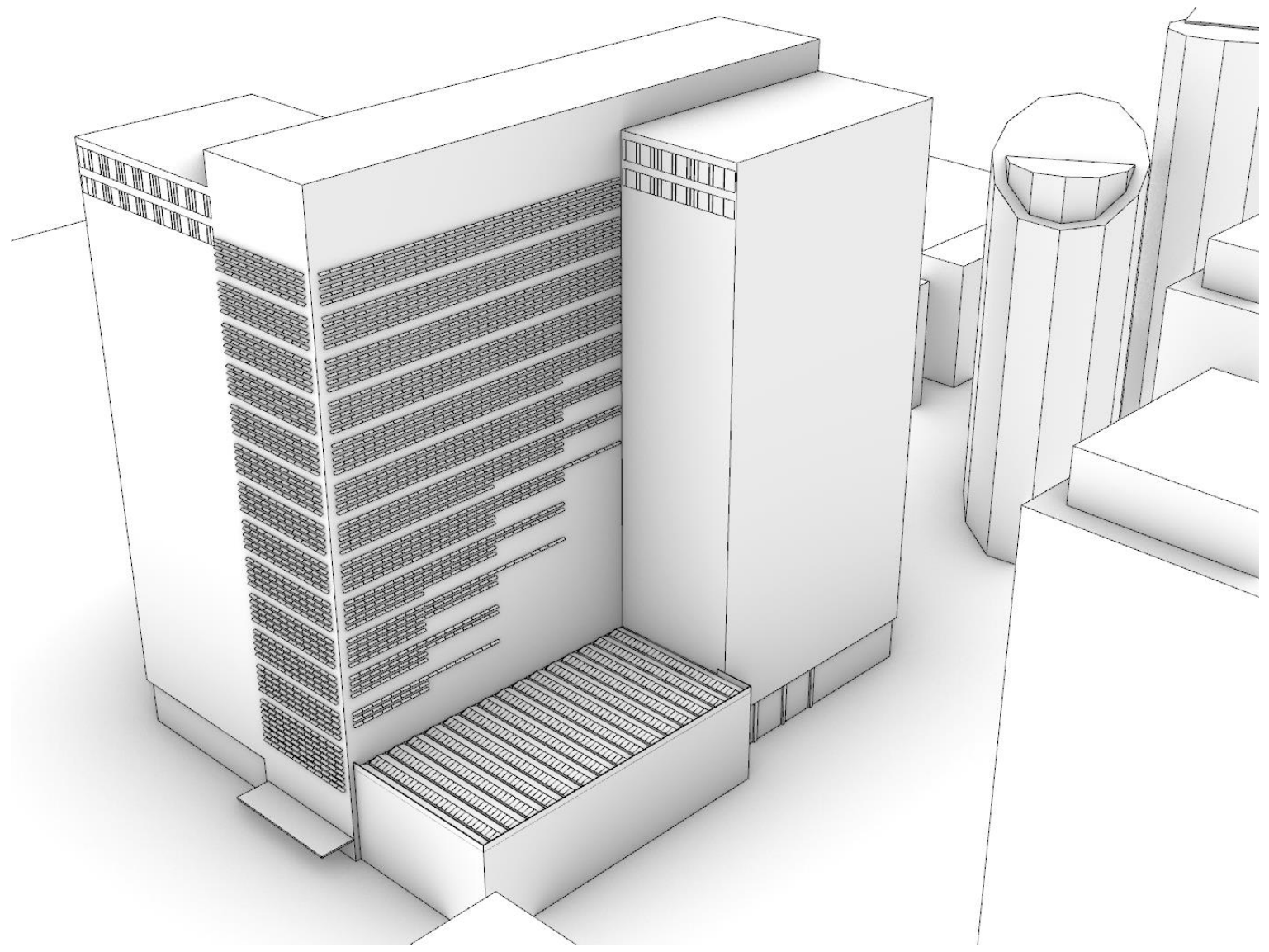
BIPV DESIGN





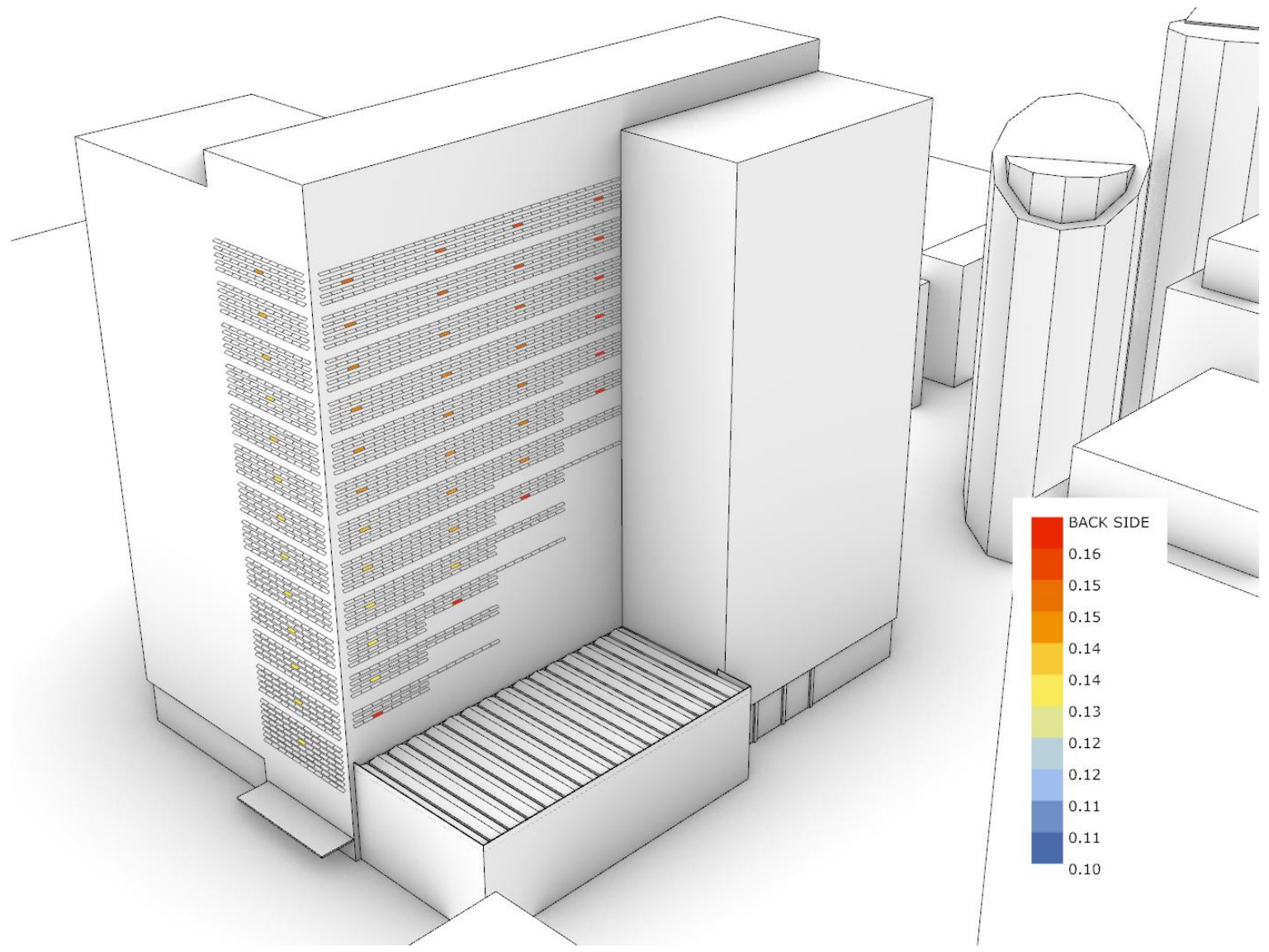






BIFACIAL PV PANELS







THANK YOU